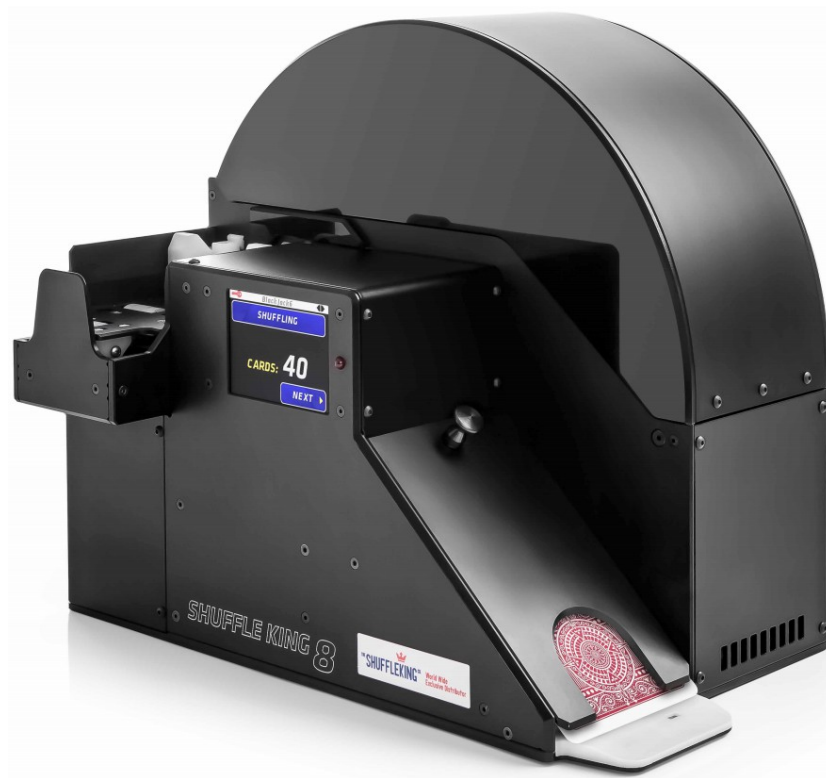


SHUFFLE KING 8

1 to 8 deck shuffler

User manual

www.casinoshuffler.com



CASINO  SHUFFLER

The product is in conformity with requirements of the EMC Directive 2004/108/EC, with reference to electromagnetic compatibility.



Table of Contents

1	Package contents	4
2	Specification and working conditions	4
3	Shuffler description	5
4	Shuffler operation	7
4.1	POKER shoe mounting	7
4.2	BLACKJACK / BACCARAT shoe mounting	9
4.3	Display Explanatory Notes	10
5	Cleaning of shuffler	12
5.1	Cleaning with compressed air	13
6	Troubleshooting	14

1 Package contents

1x Card shuffler
1x Power adapter 230/24VDC
1x Power cord
1x BlackJack shoe
1x Poker shoe
1x Boss key

Attention!!!

- If the shuffler is transported or stored at low temperatures, it must be allowed to warm up to room temperature for at least 30 minutes before use.
- Do not cover bottom ventilation openings of fan.
- Do not use bent or otherwise mechanically damaged cards.
- Do not remove the shuffler lid during shuffling.

2 Specification and working conditions

Dimensions

Length: 342,5 mm (13,4")

Width: 203 mm (8")

Height: 297,5 mm (11.7")

Weight 8,1 Kg (17,9 lbs)

Power supply 24V/2A (adapter included)

Working temperature: 20 to 35°C

Relative humidity: 10 to 90% (non-condensing)

Working position: upright with the lid upwards

Time of filling 8 decks: 3min 15sec

Time of filling 6 decks: 2min 22sec

Time of 1 deck shuffle for poker: 22sec

Time of emptying 8/6 decks: 1min 21sec

Recommended playing cards material: 100% plastic

3 Shuffler description

The shuffler is built for one to eight decks of plastic cards with a maximum size of 88 x 63 mm.

Fig. 1:



- 1 – Master switch
- 2 – Fuse sleeve
- 3 – Power connector
- 4 – Boss key / servicing connector
- 5 – Two connectors located next to the fan are used only in cases of servicing by manufacturer.

Fig. 2:

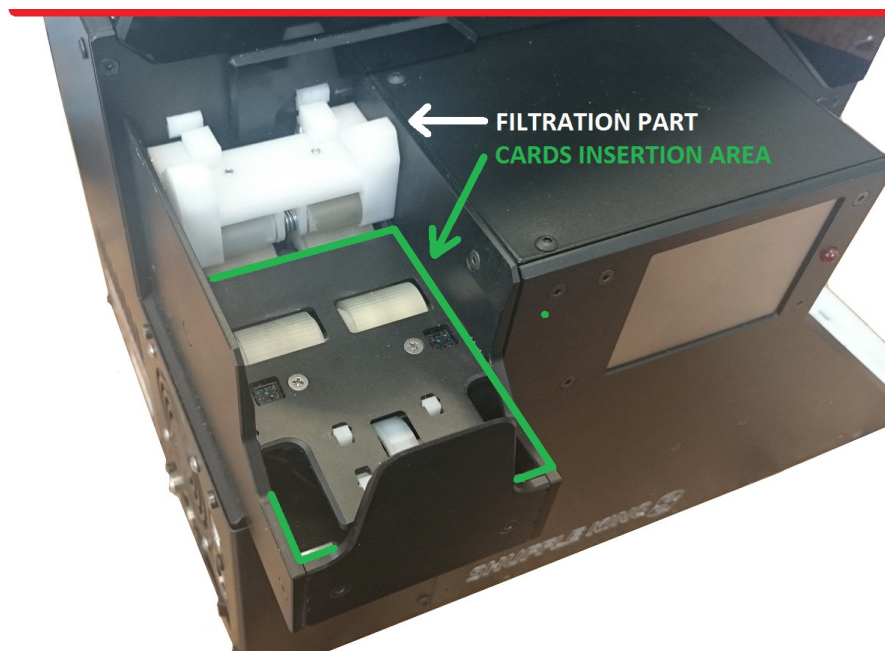


Fig. 3: POKER SHOE

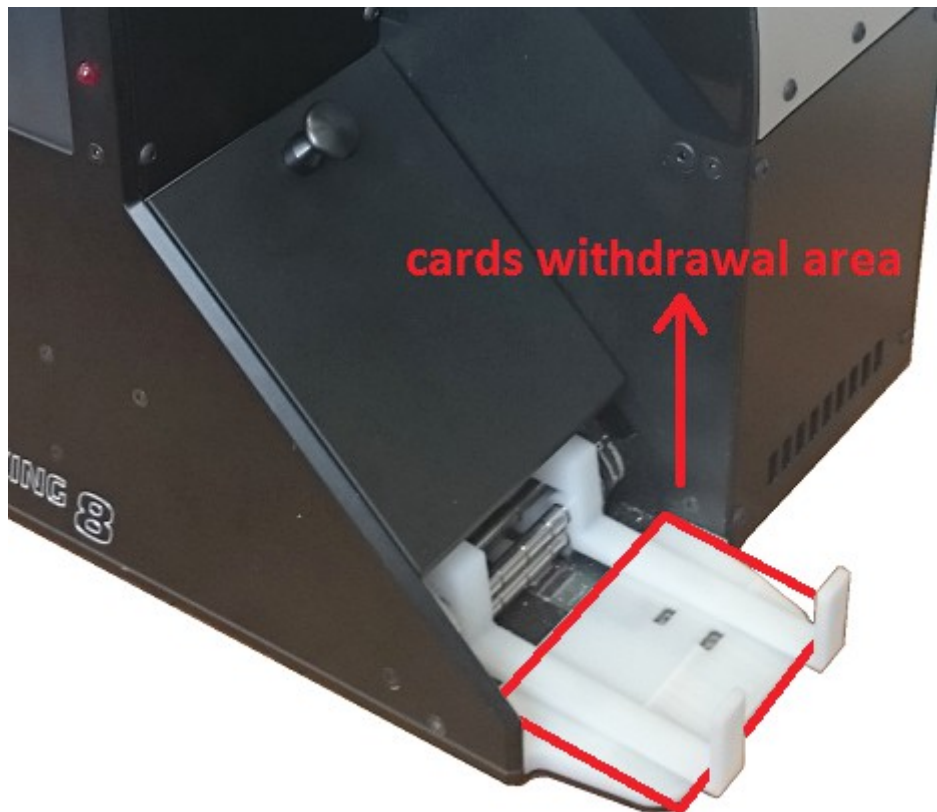
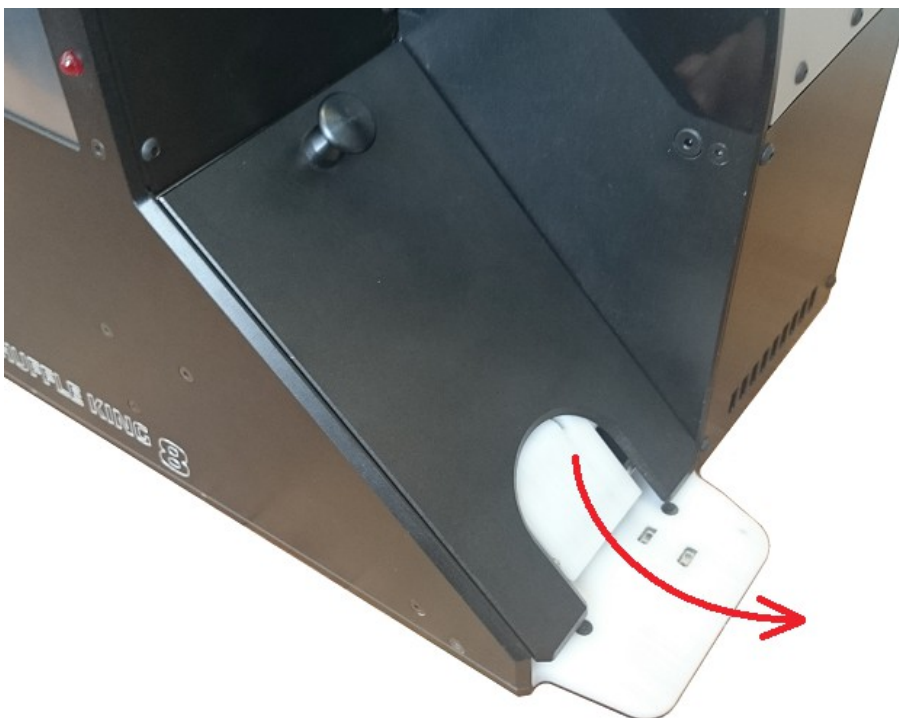


Fig. 4: BLACKJACK / BACCARAT SHOE



4 Shuffler operation

Connect the power cord to mains and to the power adapter. Connect the power adapter to shuffler. Turn on the shuffler using *Master switch* (Fig.1). After switching on, a dimmed image with the logo SK8 appears on the display.



Before shuffling, choose the game (Fig. 15) and attach the right shoe (the extension with the appropriate magnetic cover) for BlackJack/Baccarat (Fig. 9) or Poker games (Fig. 5).

For POKER games, use ideally 2 decks of 52 cards. When 1. deck is shuffled, you can start to shuffle the other deck while the 1. deck is used in the game.

If you choose BLACKJACK, you have to Shuffle / Fill all 312 cards first (6 decks), only then it is possible to start dealing cards for the game.

If you choose BACCARAT, you have to Shuffle / Fill all 416 cards first (8 decks), only then it is possible to start dealing cards for the game.

The minimum number of cards when the shuffler deals with the Blackjack / Baccarat shoe is 156. Then it is necessary to return the taken cards to the dispenser in order to replenish the tray.

4.1 POKER shoe mounting

Prepare the poker extension and appropriate magnetic cover (Fig. 5). Remove blackjack / baccarat extension and cover.

Fig. 5:

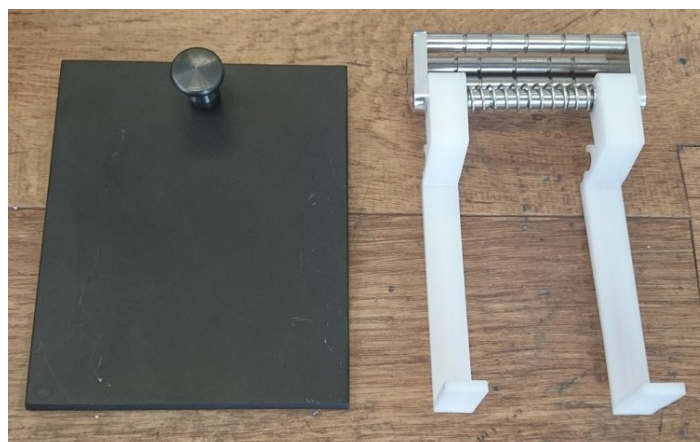
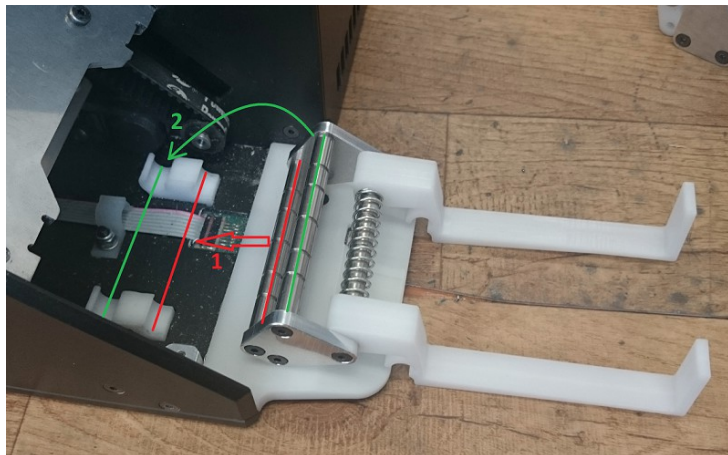


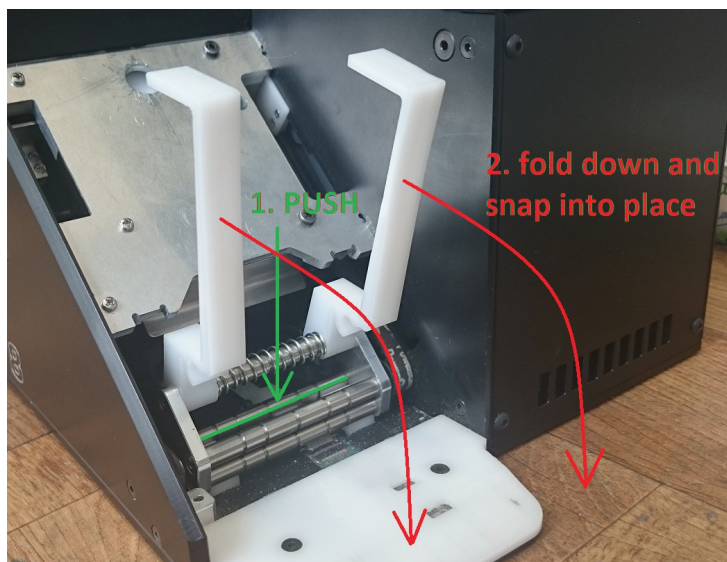
Fig. 6:



Position the extender correctly as shown in Fig. 6.

First attach the red-marked column into its place, then flip the green-marked column into its place.

Fig. 7:

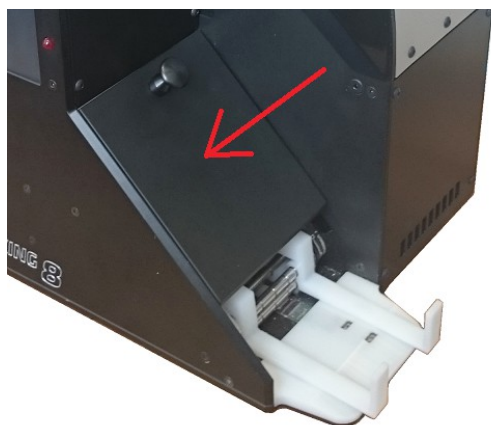


Push and snap the green-marked column to its place (Fig. 7)

Fold down and snap card holders (red arrows):



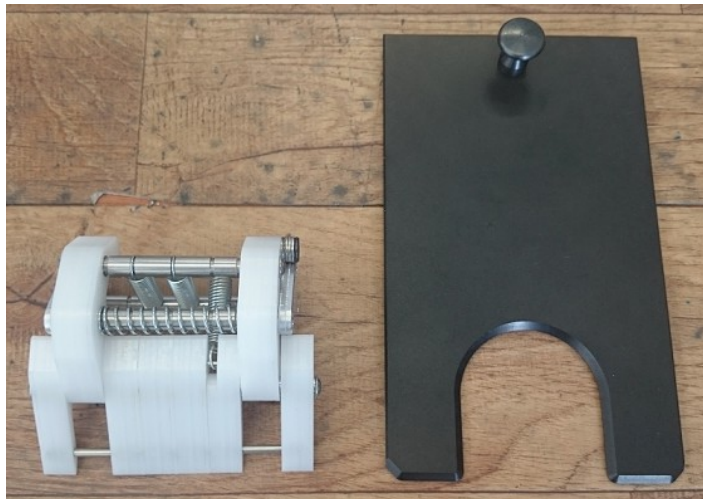
Fig. 8:



Thoroughly place the appropriate magnetic cover. The shuffler is now ready for poker games.

4.2 BLACKJACK / BACCARAT shoe mounting

Fig. 9:



Prepare the blackjack / baccarat extension and appropriate magnetic cover (Fig. 9). Remove poker extension and cover.

Position the extender correctly as shown in Fig. 10. First attach the red-marked column into its place, then flip the green-marked column into its place.

Push on the plastic pieces and snap the green-marked column to its place (Fig. 11).

Fig. 10:

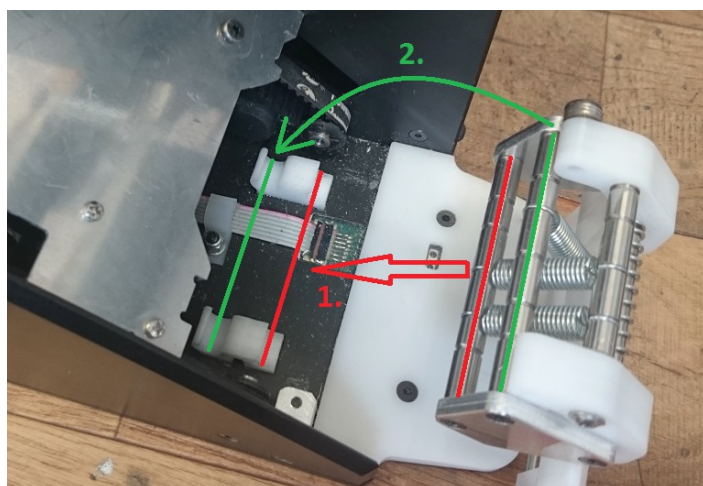


Fig. 11:

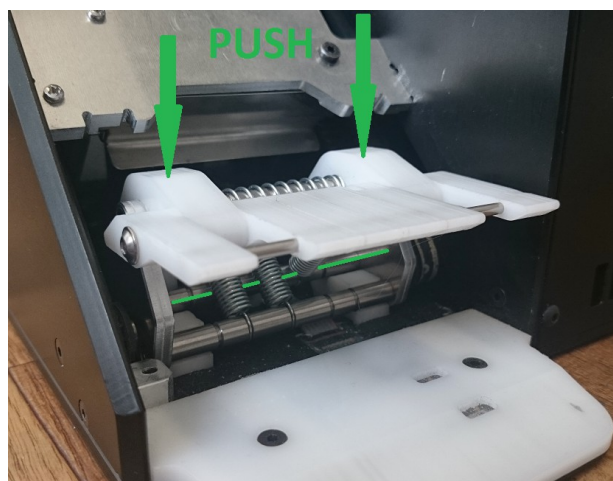
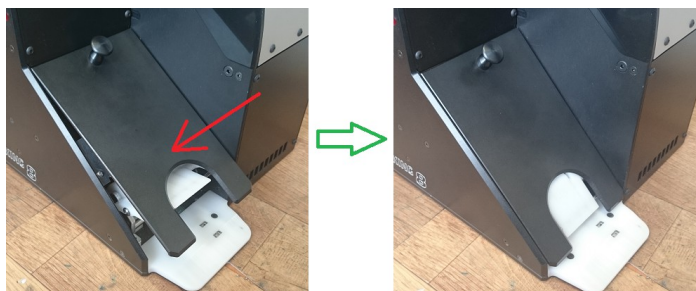


Fig. 12:



Thoroughly place the appropriate magnetic cover. The shuffler is now ready for blackjack and baccarat.

4.3 Display Explanatory Notes

After turning on the machine, the home screen appears (Fig. 13).

Fig. 13: Home screen



Currently chosen game can be checked in the upper line (*In this case Blackjack*).

"SHUFFLING" button is used to start (or stop) shuffling. After accepting the required number of cards, the machine waits for the command to "START GAME" using this button. *In case of poker games, the game can be started also by inserting the 2. deck .*

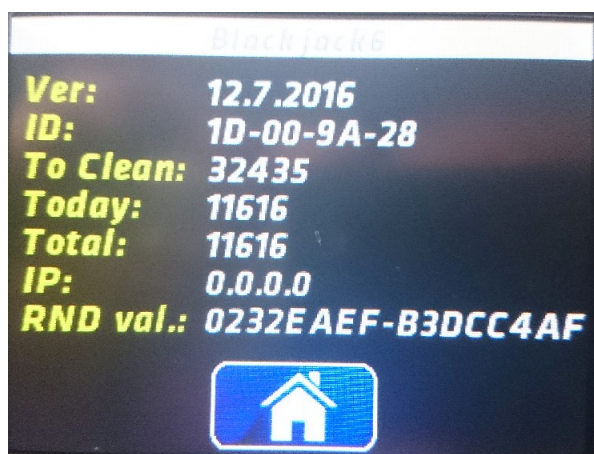
"EMPTY" button is used to start emptying cycle. Shuffling must be stopped. *To accelerate emptying, remove the magnetic cover of blackjack shoe. Batches of cards will come out one by one. During this process you can start to sort the cards.*

The current number of cards in the tray is always shown on the display.

When the shuffling is stopped, you can access the following menus:

- 1** – Information (Fig. 14)
- 2** – Game list (Fig. 15)
- 3** – Settings (Fig. 16)

Fig. 14: Information



Ver – version of current software of the shuffler

ID – each shuffler has its own unique ID number

To clean – number of cycles remaining until display of information about need to clean

Today – number of cycles since last reset (Fig. 16)

Total – total number of cycles

IP – IP address of the shuffler

RND val. – check sum for the random validation

Fig. 15: Game list



When changing the game, the shuffler must be empty.

When choosing the game, please make sure of using the right shoe:

Blackjack - 6 decks of cards necessary, works with Blackjack / Baccarat shoe (Fig. 4).

Baccarat - 8 decks of cards necessary, works with Blackjack / Baccarat shoe (Fig. 4).

Poker games - 1+1 deck of cards, works with Poker shoe (Fig. 3).

The list of games can be set up based on the specific games played in the casino.

Fig. 16: Settings



“RESET” button is used to reset *Today* counter (Fig. 14) of shuffled cards in the Information screen (works only if the Boss key is inserted).

Using “CLEAN” button you can start cleaning mode. All rollers start to rotate in order to be cleaned (filtration part has to be removed).

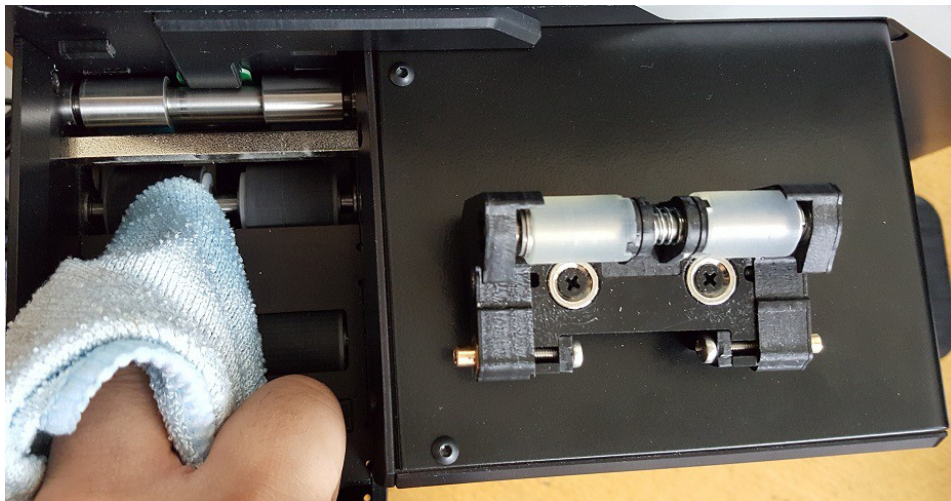
Using “SOUND” button you can turn on/off audio signal of the display.

Using “CARDS” button you can choose between shuffling mode for plastic or paper cards

5 Cleaning of shuffler

The shuffler is configured for a regular notification of cleaning after shuffling every 30 000 cards. After this period has passed, the display shows a notification of the need for cleaning. This information has no impact on the function of the shuffler, and the operator is only informed of the need to perform maintenance. In order to eliminate this warning, it is necessary to run the cleaning mode.

Run the cleaning mode in Settings on the display by pressing “*Clean*” button (Fig. 16) only if there are no cards present in any position. When it is run, all the rollers start to rotate. Remove the filtration part completely for easier access (Fig. 2). Thoroughly clean all rollers with a piece of cloth or cotton swab soaked in pure petrol or isopropylalkohol (do not use petrol cleaner, acetone and similar aggressive liquids). Do not forget to clean the silicone rollers of the filtration part.



Remove the side cover of the hole to allow access to the bottom blue rollers. Clean them with a cotton bud soaked in pure petrol or isopropylalkohol.



Clean any other visible deposits of dirt (eg. deposited on the rollers bearings) or dust on the optical cells.

Put back the filtration part (the pins must lock into the holes in the sides – audible click!). To end the cleaning mode, press the button "*Clean*" again.

5.1 Cleaning with compressed air

We recommend cleaning with compressed air once a month. Remove all the covers to get the best possible access to the inside of the machine - remove the front magnetic cover and shoe adaptor, wheel cover, small side hole cover and filtration part. Then use the compressed air to clean the inside deposits of dirt and dust.

6 Troubleshooting

If you encounter any problem or have additional questions, please do not hesitate to contact our technical support at support@casinoshuffler.com .

Do not forget to provide us with a detailed description of the problem including:

- Serial number of the shuffler (it can be found on the bottom side sticker)
- Total number of shuffled cards
- Photographic or video documentation if possible